

Mini-Fit Connector Family

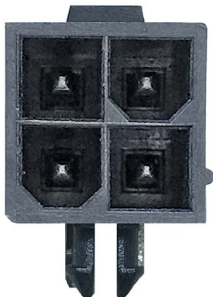
molex

The Mini-Fit Connector Family delivers up to 13.0A, while blind-mating and terminal position assurance options provide a versatile connector system for a wide range of applications

Features and Advantages

Fully isolated terminals

Protect against potential damage during handling



Polarized mating geometry

Ensures header and receptacle cannot be mated



Crimp terminals are produced from a proprietary, high-current alloy

Rated up to 13.0A per circuit

Terminals feature a patented, elongated dimple design

Provide long wipe lengths and increased contact area for improved long-term reliability



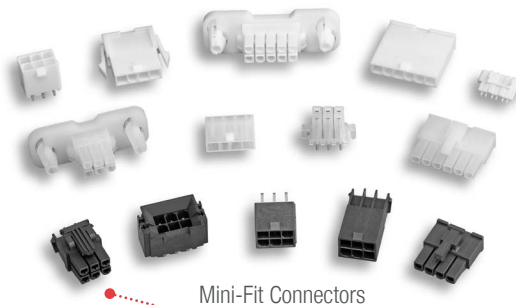
Self-aligning interface

Enables operator to mate connectors in hard-to-reach areas



Backshell option available

Secures cable. Provides strain relief



Mini-Fit Connectors

Receptacles and plugs accept both standard Mini-Fit and Mini-Fit Plug crimp terminals

Reduces the number of parts to be purchased and inventoried

Positive locking housings

Assures connectors are fully mated with easy-to-operate thumb latch. Prevents accidental unmating

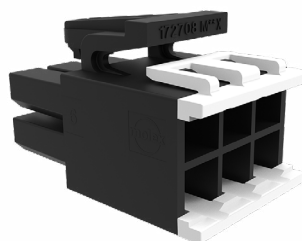


Mini-Fit Plus Connectors

Select series offer up to 1,500 mating cycles with gold terminals; standard series support 100 mating cycles with gold-plated terminals; 75 mating cycles with tin-plated terminals
Ideal for applications requiring a high number of mating cycles

Blind-mating interface

Allows 2.54mm misalignment in x and y axis for all configurations



Mini-Fit Sigma Connector

Terminal position assurance (TPA) with secondary locking feature

Reduces assembly error and ensures terminals are fully seated to prevent end-product failure

Mini-Fit Connector Family



Applications

Automotive

- Harness manufacturers
- Inside devices
- Non-sealed applications

Commercial Vehicle

- Electronic control modules

Consumer

- Gaming equipment
- Gaming machines
- Vending machines

Data/Communications

- Copiers
- Printers

Home Appliance

- White goods

Industrial

- Industrial equipment
- Power suppliers

Industrial Automation

- Automation equipment
- Food and beverage dispensers

Medical

- Medical devices
- X-rays

Telecommunications/Networking

- Backplanes
- Fan-tray assemblies
- Rack-mount servers
- Routers
- Servers
- Switches



Office Equipment



Industrial Automation



Vending Machines

Specifications

REFERENCE INFORMATION

Packaging: Reel, Bag or Tray
UL File No.: E29179
CSA File No.: LR19980
Mates with: Other Mini-Fit and Mini-Fit Plus Housings
Use With: Mini-Fit and Mini-Fit Plus Terminals
Designed In: Millimeters
RoHS: Yes
Halogen Free: Yes, some series
Glow Wire Capable: Yes, some series

ELECTRICAL

Voltage (max.): 600V AC/DC
Current (max.): 9.0A (Mini-Fit); 13.0A (Mini-Fit Plus),
11.5A (Mini-Fit Sigma)
Contact Resistance (max.): 10 milliohm
Dielectric Withstanding Voltage: 2200V AC
Insulation Resistance (min.): 1000 Megohms

MECHANICAL

Contact Insertion Force (max.): 15N
Contact Retention to Housing (min.): 30N
Insertion Force to PCB (max.): 98N
Mating Force (max.): 14.7N
Unmating Force (max.): 1N
Durability (min.): 75 Cycles (Tin); 100 Cycles (Gold),
1,500 for select options (Gold)

PHYSICAL

Flammability: UL 94V-0
Housing: Nylon
Plating:
Contact Area – Tin (Sn) or Gold (Au)
Tail Area – Tin (Sn)
Underplating – Nickel (Ni)
PCB Thickness: Multiple Options
Operating Temperature: -40 to +105°C

www.molex.com/link/minifit.html

Molex is a registered trademark of Molex, LLC in the United States of America and may be registered in other countries; all other trademarks listed herein belong to their respective owners.