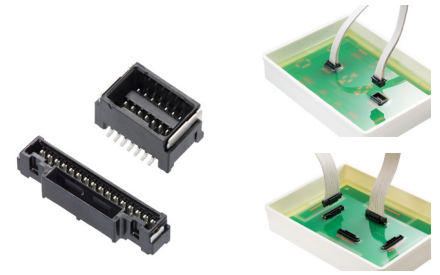


# Micro-Lock Plus 1.25mm Pitch Vertical Header with Potting Capability

**molex**

One of the smallest wire-to-board “potting” connectors, with 3.00mm- (single-row) and 6.00mm (dual-row) high potting material to safeguard contact and latch areas in applications requiring environmental protection



## Features and Advantages

### Withstands up to 105°C operating temperatures

Meets the extended temperature requirements of various industries and withstands harsh environments

Crimp Terminal  
505431\*\*\*\*

Micro-Lock Plus 1.25mm Pitch Vertical Header with Potting Capability (view of board with the connector mounted and potting liquid)

### Tin-Bismuth terminals

Prevents whiskering for a clean and uninterrupted signal; supports terminal ruggedness and reliability

Receptacle housing  
505565\*\*\*\* 2 to 16 circuit  
204532\*\*\*\* (low halogen) 2 to 16 circuit

Receptacle housing  
505432\*\*\*\* 8 to 42 circuit  
204523\*\*\*\* (low halogen) 4 to 14 circuit

Plug housing (vertical)  
205957\*\*\*\* (low halogen) 2 to 16 circuit

Plug housing (vertical)  
207760\*\*\*\* (low halogen) 4 to 14 circuit

Plug housing (vertical)  
505568\*\*\*\* 2 to 16 circuit

Plug housing (vertical)  
505433\*\*\*\* 8 to 42 circuit

Plug housing right-angle  
505567\*\*\*\* 2 to 16 circuit

Plug housing right-angle  
505448\*\*\*\* 8 to 42 circuit

### Robust metal solder tabs

Provides secure PCB retention and strain relief to solder joints

### Smallest 1.25mm-pitch vertical header with positive lock and potting capability

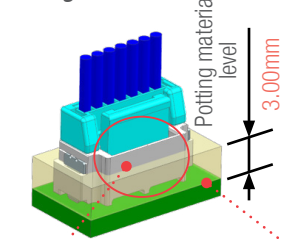
Delivers secure mating retention and environmental protection without sacrificing compactness

### Wide positive latch that delivers audible click

Offers contact assurance and secure mating retention

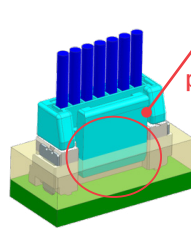
## Micro-Lock Plus 1.25 Vertical Header (single-row)

### Potting version



Added walls to protect positive lock from being immersed in potting material  
Provides durability

### Normal version



Potting liquid (up to 3.00mm height)  
Prevents ingress of dust and moisture

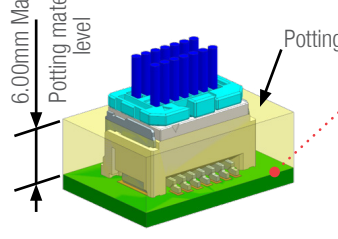
Positive lock immersed in potting material



Potting version vs Normal version

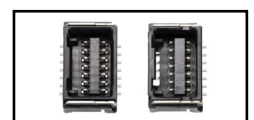
## Micro-Lock Plus 1.25 Vertical Header (dual-row)

6.00mm Max.  
Potting material level

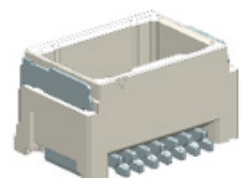
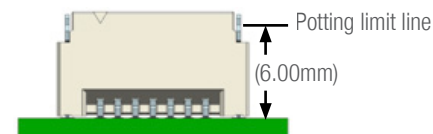


### Potting liquid (up to 6.00mm height)

Prevents ingress of dust and moisture



Potting version vs Normal version



# Micro-Lock Plus 1.25mm Pitch Vertical Header with Potting Capability

**molex**

## Markets and Applications

### Industrial

Power tools  
Test equipment  
Robots  
Factory automation  
Drones  
Vending machines



Power tool



Drone



Refrigerator

### Consumer

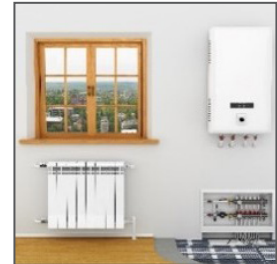
Refrigerators  
Air conditioners  
Hot water gas heaters



Vending machine



Air conditioner



Hot water gas heater

## Specifications

### REFERENCE INFORMATION

Reference Information  
Packaging: Embossed (header assembly)  
Mates With: Micro-Lock Plus Connectors  
Designed In: Millimeters  
RoHS: Yes  
Low halogen: Yes

### ELECTRICAL

Voltage (max.): 50V  
Current (max.): 3.6A (2 circuit/26 AWG) (single-row)  
2.5A (4 circuit/26 AWG) (dual-row)  
Contact Resistance (max.): 20 milliohms  
Dielectric Withstanding Voltage: 500V AC  
Insulation Resistance (min.): 100 Megohms

Current derating reference information (single-row)

AWG#	Amps (A)		
	2-Circuit	8-Circuit	16-Circuit
26	3.6	2.4	2.2
28	3.1	2.1	1.8
30	2.8	1.8	1.5

### MECHANICAL

Crimp Terminal Insertion Force (max.): 4.9N  
Crimp Terminal Retention Force (min.): 9.8N  
Crimping Pull Out Force (min.): 19.6N (26 AWG)  
Housing Lock Strength (min.):  
58.8N (14 to 16 circuits) (single-row)  
49.0N (14 circuits) (dual-row)  
Durability (max.): 30 cycles

### PHYSICAL

Header Housing – PA  
Header Pin: Copper Alloy, Tin-Bismuth plating  
Operating Temperature: -40 to +105°C

Current derating reference information (dual-row)

AWG#	Amps (A)		
	4-Circuit	8-Circuit	14-Circuit
26	2.5	2.4	2.0
28	2.2	2.1	1.7
30	1.9	1.8	1.5

# Micro-Lock Plus 1.25mm Pitch Vertical Header with Potting Capability

**molex**

## Ordering Information

**NEW** 1.25 Micro-Lock Plus connectors with potting capability

Series No.	Pitch (mm)	Component	Circuits	Rows	Color*	Minimum Order Quantity (MOQ)
<a href="#">205957</a>	1.25	Vertical Header with potting capability (Low Halogen)	2 to 16	Single	Black	Refer to SAP
<a href="#">204532</a>		Receptacle Housing (Low Halogen)	2 to 16	Single	Black	Refer to SAP
<a href="#">207760</a>		Vertical Header with potting capability (Low Halogen)	4 to 14	Dual	Black	Refer to SAP
<a href="#">204523</a>		Receptacle Housing (Low Halogen)	4 to 14	Dual	Black	Refer to SAP

Existing 1.25 Micro-Lock Plus connectors without potting capability

Series No.	Pitch (mm)	Component	Circuits	Rows	Color*	Minimum Order Quantity (MOQ)
<a href="#">505568</a>	1.25	Vertical Header	2 to 16	Single	Black	Refer to SAP
<a href="#">505567</a>		Right-angle Header	2 to 16	Single	Black	Refer to SAP
<a href="#">505565</a>		Receptacle Housing	2 to 16	Single	Black	Refer to SAP
<a href="#">505433</a>		Vertical Header	8 to 42	Dual	Black	Refer to SAP
<a href="#">505448</a>		Right-angle Header	8 to 42	Dual	Black	Refer to SAP
<a href="#">505432</a>		Receptacle Housing	8 to 42	Dual	Black	Refer to SAP

Existing 1.25 Micro-Lock Plus crimp terminal

Series No.	Pitch (mm)	Component	Circuits	Rows	Color*	Minimum Order Quantity (MOQ)
<a href="#">505431</a>		Female Receptacle Terminal for 1.25	-	-	-	Refer to SAP

\*Black housing color is standard. For non-standard color housing option, please contact Molex for more details.

[www.molex.com/link/microlockplus.html](http://www.molex.com/link/microlockplus.html)

Molex is a registered trademark of Molex, LLC in the United States of America and may be registered in other countries; all other trademarks listed herein belong to their respective owners.