

Off-the-Shelf (OTS) EXTreme Guardian Overmolded Cable Assemblies >

Off-the-Shelf (OTS) EXTreme Guardian Overmolded Assemblies with locking screw are available in 2- and 3-circuit sizes



Off-the-Shelf (OTS) EXTreme Guardian Overmolded Assemblies

Capable of carrying 50.0 to 60.0A of current

Is an excellent option for many power applications



Locking tang-on terminals

Help secure terminals in housings



Connector-locking screw

Helps ensure secure retention when receptacle and header or receptacle and plug are mated; can help prevent accidental mis-mating



Off-the-Shelf (OTS) EXTreme Guardian Overmolded Assemblies



Polarized mating geometry

Helps prevent accidental mis-mating

MARKETS AND APPLICATIONS

Aerospace and Defense Power Supplies

Uninterruptable power supplies (UPSs)

Data Communication Equipment

High-end servers

Electric vehicles

Medical

Solar

Telecommunication Equipment Manufacturers

Cellular base stations

Hubs

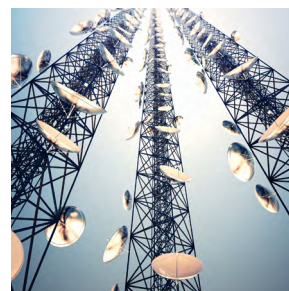
Servers

Routers

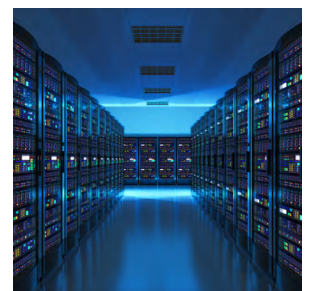
Switches



Uninterruptible Power Supply (UPS)



Cellular Towers



Servers

Off-the-Shelf (OTS) EXTreme Guardian Overmolded Cable Assemblies >

SPECIFICATIONS

Two-pin Guardian

Reference Information

Packaging: See packaging drawing
Terminal Used: 468190013
Designed In: Millimeters
RoHS: Yes
Halogen Free: No
Glow Wire Compliant: No

Electrical

Voltage (max.): 600V
Current (max.): 60.0A
Contact Resistance: 106 milliohms
Dielectric Withstanding Voltage: 1000V DC/0.01s
Insulation Resistance (min.): 10 Megohms

Mechanical

Durability (min.): 25 Cycles

Physical

Housing: PBT
Contact: Copper alloy
Plating, Contact Area—Gold
Solder Tail Area—Tin
Underplating—Nickel
Operating Temperature: -40 to +105°C

Three-pin Guardian

Reference Information

Packaging: See packaging drawing
Terminal Used: 468190013
Designed In: Millimeters
RoHS: Yes
Halogen Free: No
Glow Wire Compliant: No

Electrical

Voltage (max.): 600V
Current (max.): 50.0A
Contact Resistance: 106 milliohms
Dielectric Withstanding Voltage: 1000V DC/0.01S
Insulation Resistance: 10 Megohms

Mechanical

Durability (min.): 25 Cycles

Physical

Housing: PBT
Contact: Copper alloy
Plating, Contact Area—Gold
Solder Tail Area—Tin
Underplating—Nickel
Operating Temperature: -40 to +105°C

ORDERING INFORMATION

| Part No. | Description | Length (m) | Number of Circuits |
|----------------------------|----------------------------------------------|------------|--------------------|
| 2167592025 | EXTreme Guardian Overmolded Cable Assemblies | 2.0 | 2 |
| 2167592026 | | 4.0 | 2 |
| 2167592027 | | 6.0 | 2 |
| 2167592035 | | 2.0 | 3 |
| 2167592036 | | 4.0 | 3 |
| 2167592037 | | 6.0 | 3 |

www.molex.com/link/overmolded.html