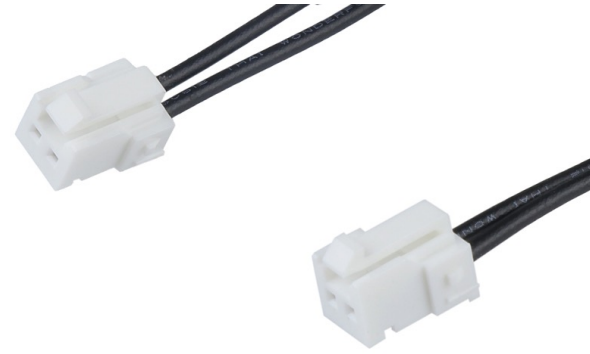


# OTS Micro TPA Cable Assemblies >

OTS MicroTPA Cable Assemblies deliver off-the-shelf (OTS) solutions with a broad offering of Molex connectors and a variety of cable lengths to facilitate both prototyping and global production.



## FEATURES AND ADVANTAGES

### Accepts wide range of wire sizes (22 to 28 AWG)

Applicable cable

### Provides ready-to-use, plug-and-play connections

Pin-to-Pin mapping from receptacle to PCB header

Current (max.)	2.5A (22 AWG)
Circuits	2 to 10
Operating Voltage (max.)	250V
Contact Resistance (max.)	20 milliohms
Operating Temperature	-40 to +105°C

### Helps to ensure high quality and meets current automotive industry standards

Meets current cable assembly industry standards

### Decreases engineering time and resources

Meets 2011/65/EU RoHS Compliance

### Provides ease of design, prototyping and production and ready to use in electronic appliance applications

UL 10002 Discrete wires

### Withstands harsh environments

RoHS compliant and high temperature capabilities

### Helps to ensure availability and wide tooling installation base in market

Uses popular crimp terminals

## MARKETS AND APPLICATIONS

### Appliances

White goods  
Washing machine  
Air conditioners  
Laser printers  
Vacuum cleaners

### Automotive

Steering wheel, paddle shift, combination switches  
Shifters  
Head-, rear-, and side-mirror lights  
Internal connection with other units



White Goods



Vacuum Cleaner



Steering Wheel Switches

# OTS Micro TPA Cable Assemblies >

## SPECIFICATIONS

### Reference Information

Packaging: Reel (Terminals); Tray (Header Assembly); Bag (Receptacle Housing)  
Designed in: Millimeters  
Mates with: MicroTPA Connectors  
RoHs: Yes  
Low Halogen: Yes

### Electrical

Voltage (max.): 250V  
Current (max.): 2.5A ( 22 AWG)  
Contact Resistance (max.): 20 milliohms  
Dielectric Withstanding Voltage:  
1000V AC (1 minute)  
Insulation Resistance (min.): 1000 Megohms

### Physical

Housing:  
Receptacle: PBTP  
Plug Housing: PBTP  
Header: PA66  
Terminal/Pin (plating):  
Receptacle: Phosphor Bronze (Pre-Tin)  
Plug: Phosphor Bronze (Pre-Tin)  
Header Pin: Brass (Pre-Tin)  
Operating Temperatures: -40 to +125°C

### Mechanical

Crimp Terminal Insertion Force (max.): 9.8N  
Crimp Terminal Retention Force (min.): 9.8N  
Pin Retention Force (min.): 9.8N  
Crimping Strength (min.): 44.1N (22 AWG)  
Durability (max.): 30 cycles

## ORDERING INFORMATION

Series No	Component	Type	Circuits	Length(mm)
<a href="#">224482</a>	MicroTPA 2 R-R	Single	2 to 10	150.00, 300.00, 600.00
<a href="#">224483</a>	MicroTPA 2 R-S	Single	2 to 10	150.00, 300.00, 600.00

[www.molex.com/link/otscableassemblies.com](http://www.molex.com/link/otscableassemblies.com)