

MX64 Pre-crimped leads OTS



Molex's range of pre-crimped leads offers a simple, cost-effective solution for prototyping, pre-production and mass production requirements. These leads are offered in female-to-female and male-to-male configurations in lengths of 75.00 to 600.00mm

FEATURES AND ADVANTAGES

Offers secure terminal retention and superior reliability

Terminal retention force of 100N

Eliminates the need for individual wire seal, improving production time and ruggedness

Matte seal

Supports US and offshore wire requirements

Accommodates 18-22 AWG wires and ISO metric wires

Current (max.)	10.0A (with Molex terminals)
Number of Circuits	2 and 3
Operating Voltage (max.)	14 V DC
Isolation Resistance (min.)	100 MΩ @500V DC
Operating Temperature	-40 to +125°C

Locks terminals in place and prevents terminal backouts for secure connections

Terminal Position Assurance (TPA)

Eliminates mating and assembly errors Color-coded to correspond to polarity

Polarization options in 3 colors

Facilitates secure mating

Wide latch for clear audible click

MARKETS AND APPLICATIONS

Automotive

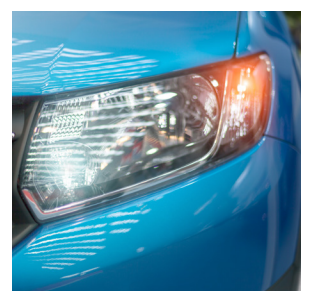
Head lamps
Daytime running lights
Front/Rear position lamps
Fog lamps
Side-marker lamps
Reversing lamps
Turn signal lamps



Head Lamps



Fog Lamps



Turn Signal Lamps

MX64 Pre-crimped leads OTS

SPECIFICATIONS AND SUPPORTING INFORMATION

Reference Information

Packaging: Bulk (Housings); Reel (Terminals)
Designed in: Millimeters
Mates with: LED Modules and other USCAR
Interfaces
RoHs: Yes
Low Halogen: Yes
Glow Wire capable: No
Sealing Class: IP67

Electrical

Operating Voltage (max.): 14V DC
Current (max.): 10.0A (With Molex Terminals)
Isolation Resistance (min.): 100 MΩ @500V DC

Mechanical

Terminal Insertion Force (max.): 70N
Terminal Extraction Force (min.): 75N (w/TPA)
Connector Mating Force (max.): 70N
Connector Un-mating Force (min.): 75N
Housing Holding Force (min.): 100N
Mating Audible Click (min.): 7Db

Physical

Contact: Copper Alloy
Plating:
Contact Area: Tin (Sn)
Solder Tail Area: Copper Alloy
Operating Temperatures: -40 to +125°C

ORDERING NUMBER

Product Family	Series Number	Length (mm)	Connector A	Connector B	Wire Size (Sq. mm)	Wire/Cable Type
MX64	224540	150, 300, and 450	Female	Female	0.52 & 0.83	UL 1005
	224541					
	224563					
	224564					
	224565					
	224566					

www.molex.com/link/precrimped.html