

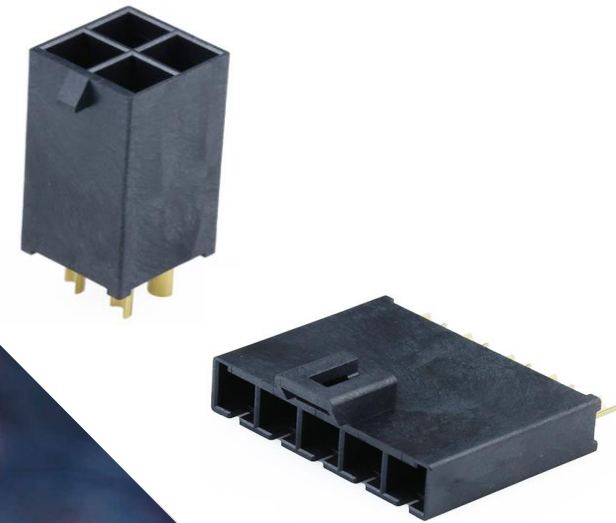
# MEGA-FIT WIRE-TO-BOARD, WIRE-TO-WIRE CONNECTORS

Adding a new test plug header option to Mega-Fit connectors with built-in pogo pin technology to help prevent connector damage during testing. This feature allows customers to conduct more time-efficient testing of electrical connections to determine precise measurements, verify functionality and ensure performance integrity. Mega-Fit connectors with test plugs provide easy access points that help engineers safely gauge parameters such as voltage, current, resistance and continuity with less risk of short circuits and terminal impairment. As a result, engineers and technicians can accurately and effectively verify that electrical components are working properly before full-scale production.

NPI EXTENSION  
JUNE 2024

*creating connections for life*

**molex**



# MEGA-FIT WIRE-TO-BOARD, WIRE-TO-WIRE CONNECTORS (TEST PLUGS)

Compact Mega-Fit Connectors overcome design engineers' challenges by offering solution-focused features. Enhanced with test plugs, these connectors are protected from damage during testing, allowing for time and cost efficiencies. Mega-Fit Power Connectors also meet the demand for greater power in a small package for excellent reliability and space savings.

## Key Product Information

Category:	Wire-to-Board, Wire-to-Wire Connectors
Current:	30.0A
Pitch:	5.70mm
Operating Temps:	-40 to +150°C



[View Product  
Landing Page](#)

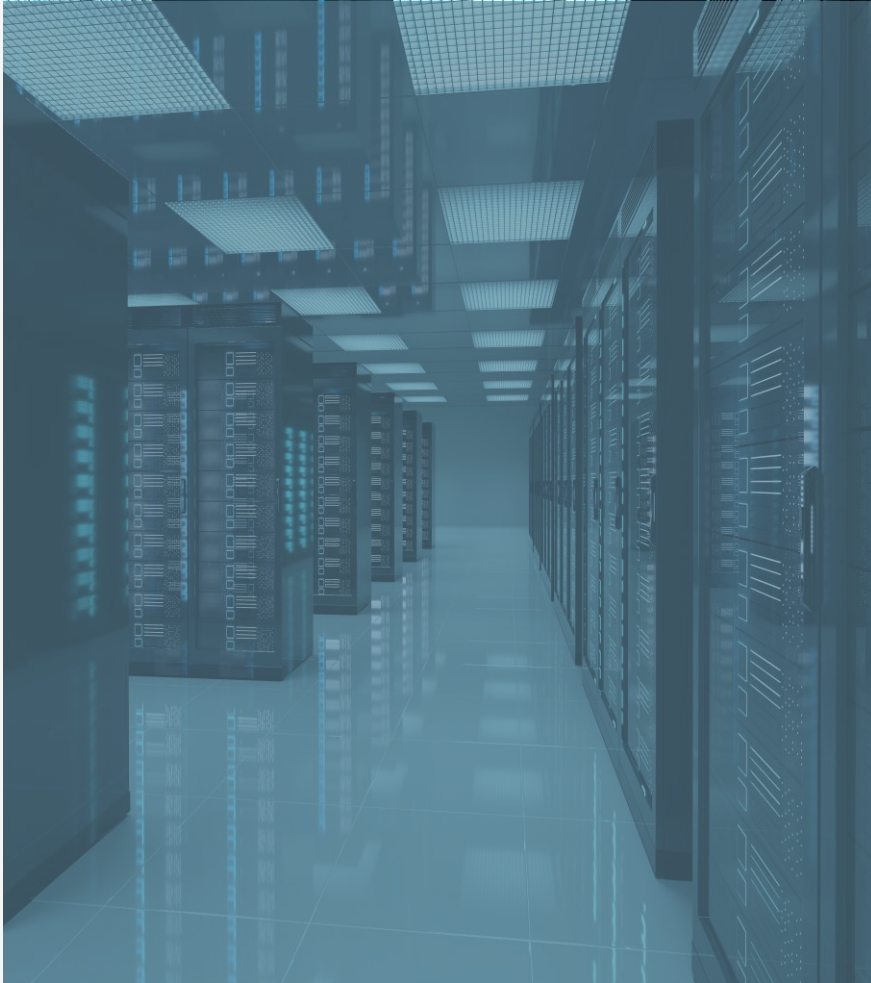
[Download Datasheet](#)

## New Series

224744	Mega-Fit Test Plug Assembly, Dual Row
224862	Mega-Fit Test Plug Assembly, Single Row



# VITAL PRODUCT INFORMATION



## Test Plug Header Option

Identifying electrical component issues after full-scale production can lead to high expense, safety issues and product failures. Engineers and technicians need a way to safely and efficiently verify that electrical components are working properly *before* full-scale production occurs. Mega-Fit Power Connector test plug headers facilitate faster and more effective component testing — permitting verification of key parameters such as voltage, current, resistance and continuity with less risk of short circuits or terminal damage.

## Built-In Pogo Pin Technology

Also known as spring-loaded pins, pogo pins help ensure consistent contact force between the test plug and connector. This reduces the risk of intermittent connectivity that can lead to signal loss during testing. The spring-loaded mechanism also absorbs shock and vibration to help reduce wear and tear. Mega-Fit Power Connector test plug headers allow customers to buy a single test plug with retractable pogo pins instead of using large volumes of regular connectors for testing.

## Fully Protected Headers in a Compact Package

Space constraints are a common challenge in today's industry applications. Glow wire capable Mega-Fit Connectors feature fully isolated headers in a compact size to help enhance design flexibility.

# MARKETS AND APPLICATIONS



*Refrigerators*

## **Appliances**

- Refrigerators
- Washers and dryers
- Heaters
- Heaters and air conditioners
- Lighting fixtures



*Infotainment Systems*

## **Automotive**

- Interior lighting
- Infotainment systems



*Assembly Lines*

## **Industrial Automation**

- Food and beverage production
- Assembly line equipment
- Heavy equipment and machinery

# MARKETS AND APPLICATIONS



*Servers*

## Power for Data Center

- Hubs
- Servers
- Power supplies
- Power distribution systems



*5G Networks*

## Telecommunications

- 5G networks
- Wireless routers
- Gateways
- Power supplies
- Remote radio



*Patient Care Equipment*

## MedTech

- Patient care equipment
- Healthcare IT

# PRODUCT FEATURES AND ADVANTAGES

**Prevents damage to standard connectors**

The built-in pogo pin technology with a spring-loaded mechanism, absorbs shock and vibration to help reduce connector wear and tear.

**Provides a safer alternative for customer testing**

The test plugs are specifically designed for testing purposes to help reduce the risk of short circuits.

**Facilitates faster and more efficient testing of electrical connections**

The test plug header option with built-in pogo pin technology helps save time while improving signal integrity during testing.

**Supports cost-effective inventory control**

Instead of purchasing high connector sample volumes for testing, customers can instead buy a single test plug with retractable pogo

**Provides superior retention**

New latch has grip steps to ensure secure mating.

**Avoids mis-mating of receptacles to header housings**

The connectors are uniquely keyed to reduce the risk of cross-mating.

**Meets V0 and Glow Wire European standards**

The new housing material is made with a V0/Glow-Wire combination resin.



**Key Specifications**

Current	30.0A
Circuits	Single row: 2 to 7; Dual row: 2 to 12
Pitch	5.70mm
Operating Temperature	-40 to +150°C





THANK YOU

*creating connections for life*

**molex**