

PowerWize 3.40mm Interconnects >

Leveraging our Coeur socket technology, PowerWize Interconnects offer a 3.40mm size with various features and deliver power efficiency that is critical for cost management. Available in right-angle and vertical pin-in-paste reflow capable headers, these high-power connectors are designed for manufacturing flexibility and exceptional electrical performance.

ADVANTAGES AND FEATURES

Provides optimal current-carrying capacity

Multiple contact beams help ensure low contact resistance, low voltage drop and minimal heat generation at the contact interface.

Offers finger touch-safe headers and receptacles

These connectors are designed per UL 60950 to isolate the crimp contacts and to prevent accidental contact with an energized circuit.

Helps ensure secure mating and helps prevent cable assemblies from disengaging headers due to shock, vibration, or mishandling

Positive-locking headers and receptacles afford Operators tactile and audible feedback during system integration.

Current	75.0A
Voltage	600V
Durability (min.)	200 mating cycles
Operating Temperatures	-40 to +125°C

Helps prevent mismatching white/natural receptacles to black headers and the reverse

These connectors are mechanically keyed and color-coded connectors for geometric differences between the black and white/natural connectors; Ideal when multiple cable assemblies are used in the same application.

Offers design/manufacturing flexibility

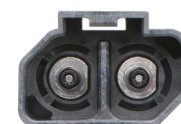
Crimp contacts are offered in two wire gauges so customers can match their application's current carrying need with the optimal wire size to minimize cable assembly cost and still deliver the required power.

Helps prevent mounting black headers in PCB locations designed for white/natural headers and the reverse

Polarized and color-coded connectors allow position differences between the black and white/natural header polarizing pegs; ideal when multiple headers are used in the same application.

Offers exceptional manufacturing flexibility

The headers are designed for pin-and-paste SMT reflow processing and/or wave solder processing.



PowerWize 3.40mm Interconnects >

MARKETS AND APPLICATIONS

Networking

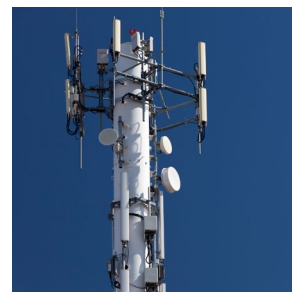
Circuit breakers
Data storage units
Enterprise switches
Power distribution units (PDUs)
Routers
Servers
UPS/battery storage units



Servers



Factory Equipment



5G/6G Base Stations

Industrial Automation

Battery farms
Factory equipment
Robotics

Telecommunications

5G/6G Base Stations
Data storage units
Power distribution units (PDUs)
Digital cross connect switches
Network routers
Servers
Uninterruptable power supplies (UPSs)

SPECIFICATIONS

Reference Information

Packaging:
Female Crimp Contact: Tray
Receptacle Housing: Bag
Header: Tray/tape and reel
Use With: Printed circuit boards
Designed In: Millimeters
RoHS: Compliant
REACH: Compliant
Low-halogen: Compliant
Flammability: UL 94V-0

Physical

Receptacle Housing: PBT
Header Housing: LCP
Contact: Copper alloy
Plating:
Socket contact area—gold
Pin—silver
PCB Thickness (min.): 1.58mm
Operating Temperatures: -40 to +125°C

Electrical

Voltage (max.): 600V
Current (max.): 75.0A
Contact Resistance (max.): 0.25 milliohms

Mechanical

Whole Connector Mating Force (max.): 45N
Whole Connector Unmating Force (min.): 10N
Durability (min.): 200 mating cycles

www.molex.com