

# Pre-Crimped Leads >

Molex's range of pre-crimped leads offers a simple, cost-effective solution for prototyping, pre-production and mass production requirements. These leads are offered in female-to-female and male-to-male configurations in lengths of 75.00 to 600.00mm.



C-Grid III      CLIK-Mate      DuraClik      iGrid      KK      KK Plus



Mega-Fit      MicroClasp      Micro-Fit 3.0      Micro-Fit+      Micro-Lock Plus      Micro-One



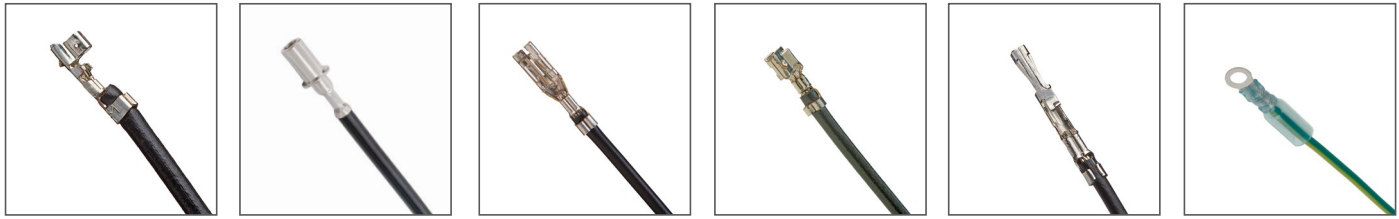
Milli-Grid      Mini-Fit      Mini-Fit Max      Mini-Fit Sigma      Mini-Fit Sr.      Mini-Lock



Mini-Fit Versa Color      Mini-SPOX      Mizu-P25      MLX      MOX      MX150

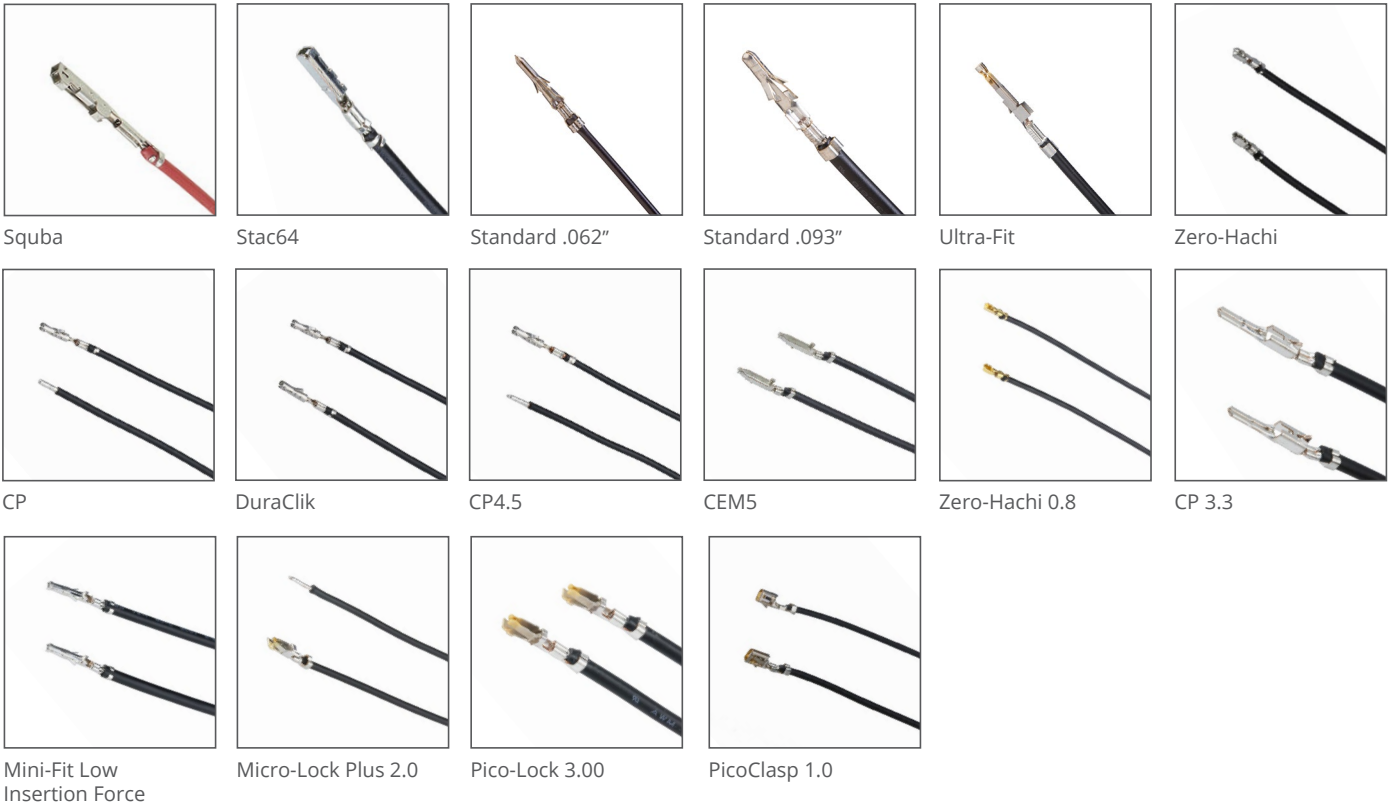


Nano-Fit      OneBlade      PicoBlade      Pico-Clasp      Pico-EZmate      Pico-Lock



Pico-SPOX      PowerWize      Sabre      Sherlock      SL      Solderless Ring

# Pre-Crimped Leads >



## Ordering Information

Product Family	Series Number	Length (mm)	Connector A	Connector B	Wire Size (AWG)	Wire/Cable Type
C-Grid	79758	150, 300	Female	Female	22	UL 1061
CLIK-Mate	79758, 215710, 215711	75, 150, 225, 300, 450	Female, Male	Female, Male	24, 26, 28	UL 1061, UL 10002
CP Term	227903 221951 228038	150, 300, 450	Female	Female Strip	0.75mm <sup>2</sup> 0.50mm <sup>2</sup>	FLRYW, FLRYW125-B
CP 3.3	229112, 229113, 229114, 229115, 229116, 229117, 229118, 229119	150, 300, 500	Male	Male Strip	22, 28	UL 1007
CP4.5 Term	227107 227108	150, 300, 450	Female	Female Strip	16, 18	FLYW
DuraClik	227022 227023	150, 300, 450	Female	Female Strip	22, 24	ENDURA
iGrid	217490, 217491	75, 150, 225, 300, 450	Female	Female	22, 24, 26	UL 10002
KK	79758	150, 300	Female, Male	Female, Male	22, 24	UL 1061, UL 1007
KK Plus	79758, 217510, 217511	75, 150, 225, 300, 450	Female	Female	18, 22, 24, 26	UL 1015, UL 1569

# Pre-Crimped Leads



## Ordering Information

Product Family	Series Number	Length (mm)	Connector A	Connector B	Wire Size (AWG)	Wire/Cable Type
<a href="#">Mega-Fit</a>	79758	150, 300	Female	Female	16, 12	UL 1015
<a href="#">Micro-Clasp</a>	79758	150, 300	Female	Female	24	UL 1007
<a href="#">Micro-Fit 3.0</a>	79758, 214760, 214761, 214762, 214763	150, 300, 600	Female, Male	Female, Male	18, 20	UL 1061, UL 10002
<a href="#">Micro-Fit+</a>	36769	300	Female, Male	Strip and Tin	16, 20, 24	UL 1061 (16AWG) UL 11028 (20AWG, 24AWG)
<a href="#">Micro-Lock Plus</a>	79758, 217500, 27501	75, 150, 225, 300, 450	Female	Female, Strip	22, 24, 26	UL 1061, UL 10002
Micro-Lock Plus 2.0	229808, 229809, 229810, 229820, 229818, 229816, 229811, 229821, 229819, 229817, 229823, 229822	150, 300, 500	Female	Female	22, 26	UL 1061
<a href="#">Micro-Fit+ CEM5</a>	228369, 228370, 228431, 228432	150, 300, 450	Female	Female, Strip	16, 28	UL 1061
<a href="#">Micro-One</a>	219654	Female	Female	Female	22	UL 1569
	219655			Female, Strip	22, 24, 26	
<a href="#">Mini-Fit Max</a>	224087 224088	16, 28	Female	Female	2.00	UL1569
Mini-Fit Low Inserstion Force	229556, 229558, 229557, 229559, 229560, 229562, 229561, 229563, 229564, 229566, 229565, 229567	150, 300, 500	Female	Female, Strip	16,20,24	UL 1007 UL 1015
<a href="#">Mini-Fit Sr.</a>	217480, 217481, 217482, 217483	UL 1061	Female, Male	Female, Male	8, 10, 12	UL 10669
<a href="#">Mini-Fit Versa Color</a>	226197	150, 300, 450	Female, Male	Female, Male, Strip and Tin	18, 20	UL 1015
<a href="#">Mini-Lock</a>	79758	150, 300	Female	Female	22	UL 1061
<a href="#">Mini-Spox 2.5</a>	219676 219677	75, 150, 225, 300, 450	Female	Female	22, 24, 26	UL 1569
<a href="#">Mizu-P25</a>	217840, 217841, 217842, 217843, 217520, 217521, 217522, 217523	75, 150, 225, 300, 450	Female, Male	Female, Male	20, 22	UL10002, FLRY-B
<a href="#">MLX</a>	79758	150, 300	Female, Male	Female, Male	18	UL 1015
<a href="#">MOX</a>	226208	150.00, 300.00, 450.00	Female	Female, Strip	20, 22	SAE1128-TXL
<a href="#">MX150</a>	226208	150, 225, 300, 450, 600	Female, Male	Female, Male	14, 16, 18	TXL
<a href="#">Nano-Fit</a>	79758	150, 300	Female	Female	20	UL 1061

# Pre-Crimped Leads



## Ordering Information

Product Family	Series Number	Length (mm)	Connector A	Connector B	Wire Size (AWG)	Wire/Cable Type
<a href="#">OneBlade</a>	79758	150, 300, 450	Female	Female, Strip and Tin	28, 30	UL 10125
<a href="#">PicoBlade</a>	79758, 214902, 214921, 214922, 214923	75, 150, 225, 300, 450	Female, Male	Female, Male and Strip	26, 28	UL 1061
<a href="#">Pico-Clasp</a>	79758	150, 300	Female	Female	28	UL 1571
<a href="#">PicoClasp 1.0</a>	231754, 231755	150, 450, 300	Female	Female	28 AWG	UL 1571
<a href="#">Pico-EZmate</a>	79758	300	Female	Female	28	UL 1516
<a href="#">Pico-Lock</a>	79758	150, 300	Female	Female	24, 30	UL 1061, UL 1571
Pico-Lock 3.00	229829, 229829, 229824, 229831, 229826, 229832, 229827, 229830, 229825	150, 300, 500	Female	Female	16, 18, 20	UL 1007
<a href="#">Pico-SPOX</a>	79758	150, 300	Female	Female	24	UL 1061
<a href="#">PowerWize</a>	221960	600	Female	Female	2	UL 10198
			Female	Strip		
<a href="#">Sabre</a>	79758	150, 300	Female, Male	Female, Male	16	UL 1015
<a href="#">Sherlock</a>	79758	150, 300	Female	Female	26	UL 1061
<a href="#">Squba</a>	217790, 217791, 217792, 217793, 219676, 219677	75, 150, 225, 300, 450	Female	Female	22, 24, 26	UL 10002, UL 1569
<a href="#">Stac64</a>	224451, 224452, 224572	150, 300, 450	Female	Female, Strip	18, 20	FLRYW
Standard .062"	79758	150, 300	Female, Male	Female, Male	22	UL 1015
Standard .093"	79758	150, 300	Female, Male	Female, Male	18	UL 1015
<a href="#">Ultra-Fit</a>	79758, 217470, 217471	75, 150, 225, 300, 450	Female	Female	16, 18, 20	UL 1061, UL 11028
<a href="#">Zero-Hachi</a>	219672, 219673	150, 300, 450	Female	Female, Strip and Tin	28, 30	UL 10064
Zero-Hachi 0.8	229094, 229095, 229096, 229097	150, 300, 500	Female	Female, Strip	28, 30	UL 10064

Product Family	Series Number	Length (mm)	Stud Size	Wire Termination	Wire Size (AWG)	Wire/Cable Type
<a href="#">Solderless Ring Terminal</a>	217851	150	10 (M5)	Blunt cut	16 AWG	UL 1015
		300				
		600				

[www.molex.com/link/precrimped.html](http://www.molex.com/link/precrimped.html)

Molex is a registered trademark of Molex, LLC in the United States of America and may be registered in other countries; all other trademarks listed herein belong to their respective owners.